

PUYALLUP OFFICE SPACE FOR SUBLEASE

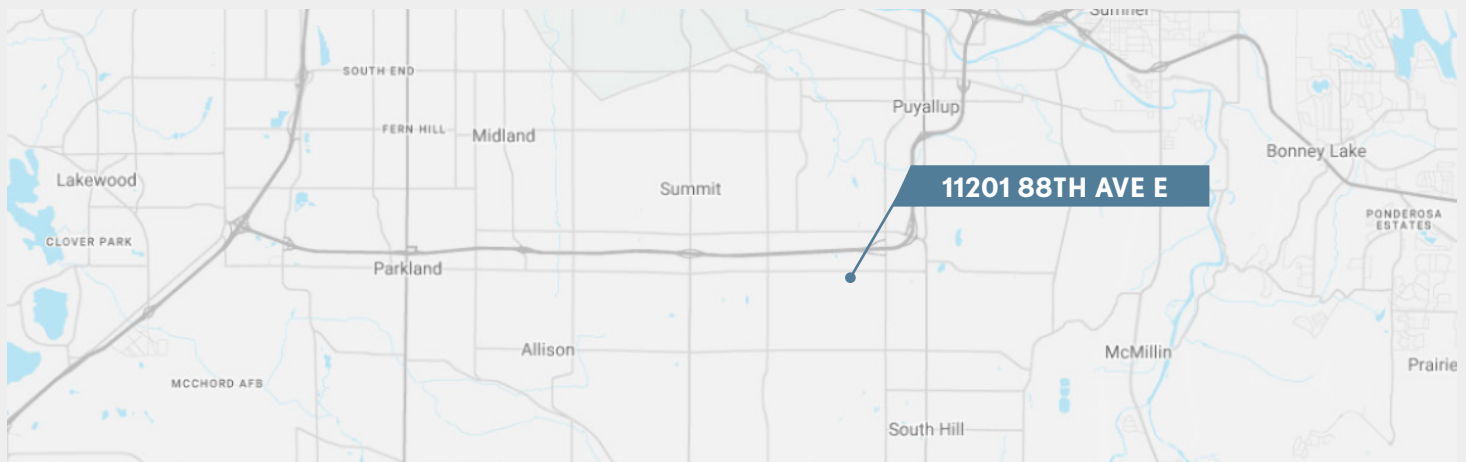


11201 88TH AVE E

PUYALLUP, WA 98373

PARCEL #	602136-0-390
AVAILABLE SF	1,400 RSF
LEASE RATE	\$18.00 SF/YR + NNN
LEASE TYPE	NNN
NNN EXPENSES	approx. \$8.00 / SF / YR

- Sublease Through July 2026
- Suite 220, 2nd Floor
- Former Mortgage Office
- Reception, Private Offices, Kitchen Area
- Across From South Hill Mall & Costco
- Easy Access From SR-512
- Large On-Site Parking Lot



WESTLAKE
ASSOCIATES, INC.

MARK ALFIERI

BROKER

P 425.985.8542

malfieri@westlakeassociates.com

EWING & CLARK
INCORPORATED

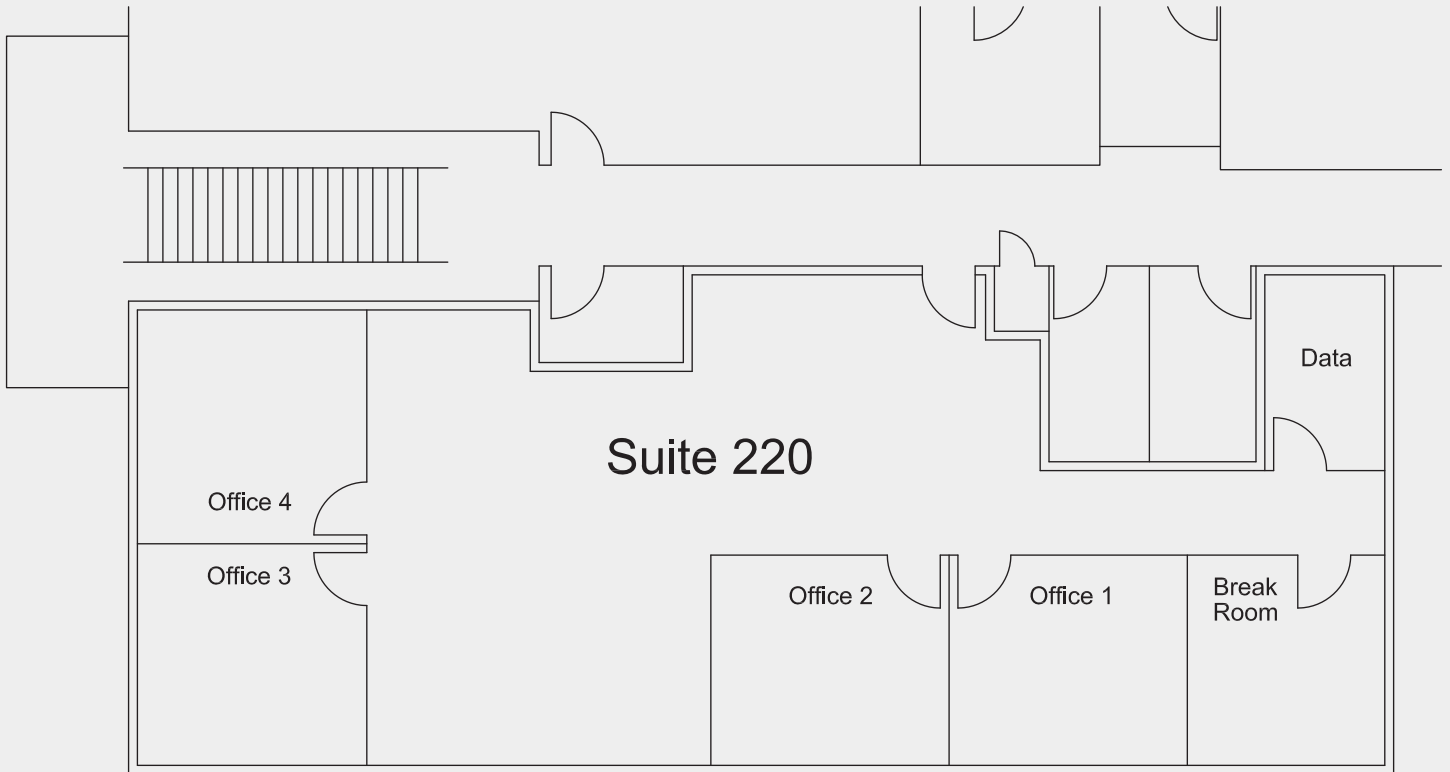
PETER ARGERES

BROKER

P 206.612.7877

pargeres@ewingandclark.com

OFFICE SPACE FOR SUBLEASE



Puyallup Procura - Durango Bldg

approximately 10'
August 2020
Not to Scale



MARK ALFIERI

BROKER

P 425.985.8542

malfieri@westlakeassociates.com



PETER ARGERES

BROKER

P 206.612.7877

pargeres@ewingandclark.com

OFFICE SPACE FOR SUBLEASE



MARK ALFIERI

BROKER

P 425.985.8542

malfieri@westlakeassociates.com



PETER ARGERES

BROKER

P 206.612.7877

pargeres@ewingandclark.com

OFFICE SPACE FOR SUBLEASE



©2024 WESTLAKE ASSOCIATES, INC.
DISCLAIMER: This information has been secured from sources we believe to be reliable, but we make no representations or warranties, expressed or implied, as to the accuracy of the information. References to square footage, age, and numbers are approximate. Parties must verify the information and bear all risk for any inaccuracies.



MARK ALFIERI
BROKER

P 425.985.8542
malfieri@westlakeassociates.com



PETER ARGERES
BROKER

P 206.612.7877
pargeres@ewingandclark.com