

# FREESTANDING OFFICE WAREHOUSE WITH RETAIL EXPOSURE FOR LEASE



## 4000 AIRPORT WAY S SEATTLE, WA 98108

TOTAL AVAILABLE SF **2,573 SF**

1,727 SF OFFICE / 846 SF WAREHOUSE

LEASE RATE **\$3,850/MO + NNN**



- Office Area Includes Reception Area, Coffee Bar, Six Offices and Two Larger Meeting Rooms
- IGU-85 Zoning - City of Seattle
- 2,573 SF Total Available Square Feet
- 1,727 SF Air-Conditioned Office Space
- 846 SF Warehouse Space
- Pole Sign Visibility to 15,700 VPD
- One 10'x10' Electric Roll-Up Door
- Skylights & Interior Lights In Office Area
- Free On-Site Parking
- Restaurants/Services on 3 Adjacent Corners of the Property on Andover Street and Airport Way



**MATTHEW LITTLE, CCIM**  
PRINCIPAL | MANAGING BROKER  
P 206.505.9422  
little@westlakeassociates.com

**TYLER LITTLE**  
BROKER  
P 206.428.9902  
tyler.little@westlakeassociates.com

# INDUSTRIAL OFFICE FOR LEASE



**MATTHEW LITTLE, CCIM**  
PRINCIPAL | MANAGING BROKER  
P 206.505.9422  
little@westlakeassociates.com

**TYLER LITTLE**  
BROKER  
P 206.428.9902  
tyler.little@westlakeassociates.com

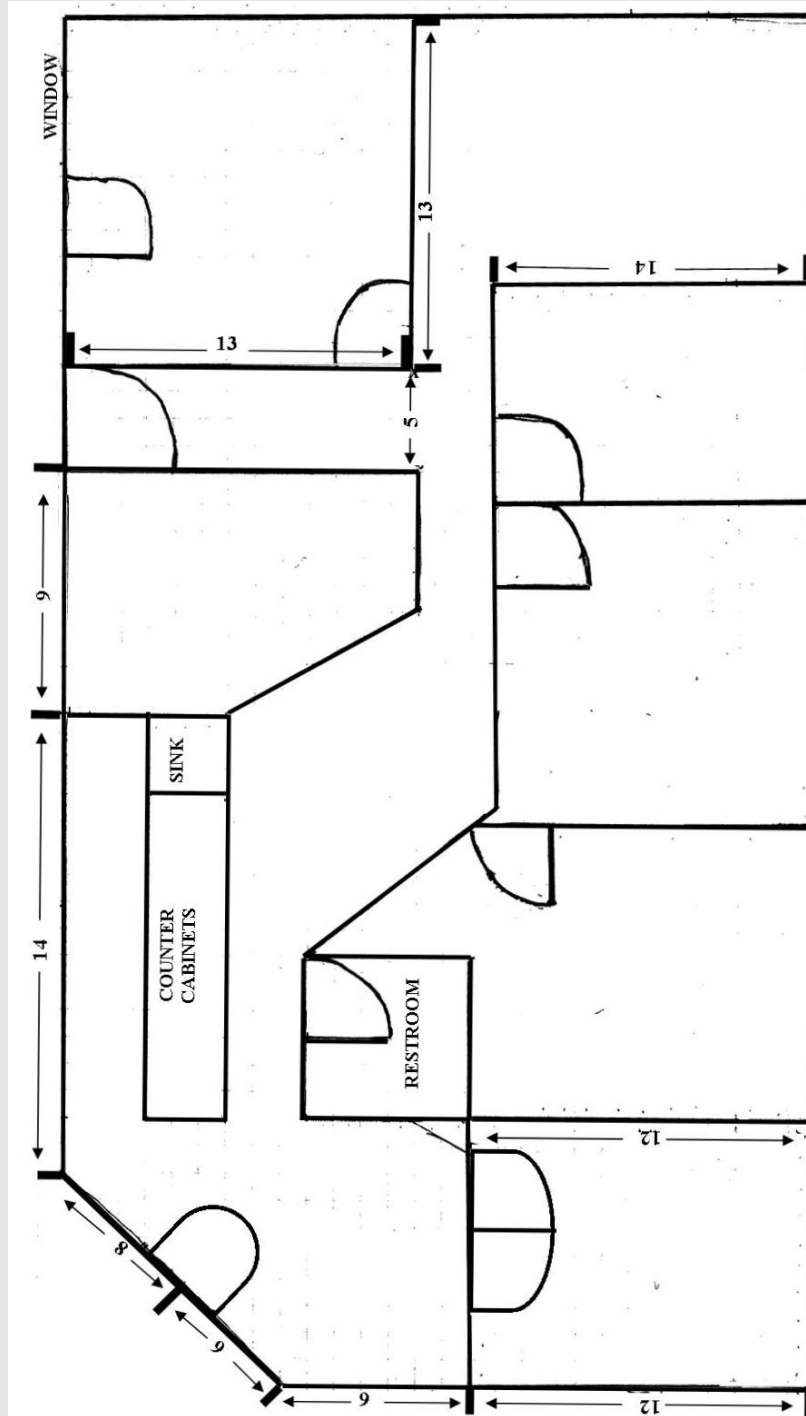
# INDUSTRIAL OFFICE FOR LEASE



**MATTHEW LITTLE, CCIM**  
PRINCIPAL | MANAGING BROKER  
P 206.505.9422  
little@westlakeassociates.com

**TYLER LITTLE**  
BROKER  
P 206.428.9902  
tyler.little@westlakeassociates.com

# INDUSTRIAL OFFICE FOR LEASE



**MATTHEW LITTLE, CCIM**  
PRINCIPAL | MANAGING BROKER  
P 206.505.9422  
little@westlakeassociates.com

**TYLER LITTLE**  
BROKER  
P 206.428.9902  
tyler.little@westlakeassociates.com

# INDUSTRIAL OFFICE FOR LEASE



**MATTHEW LITTLE, CCIM**  
PRINCIPAL | MANAGING BROKER  
P 206.505.9422  
little@westlakeassociates.com

**TYLER LITTLE**  
BROKER  
P 206.428.9902  
tyler.little@westlakeassociates.com